

Pottawatomie County, OK

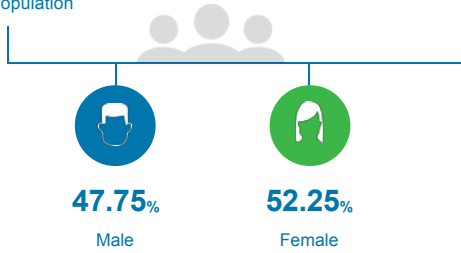
Community Profile

People

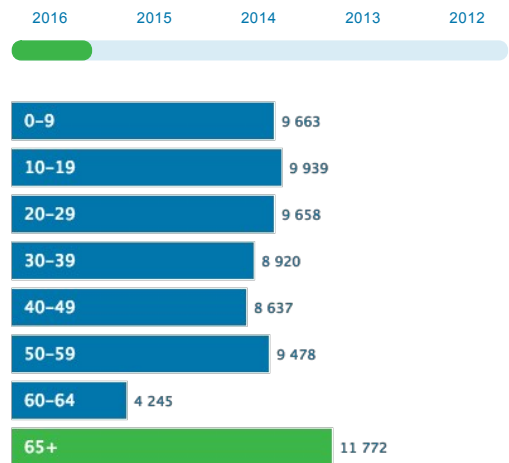
The total population of Pottawatomie County is 72,312. The median age is 36.68.

72,312

Total Population



Age Distribution

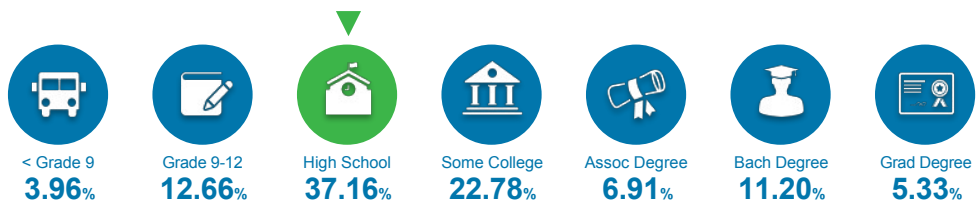


Median Age

36.68

Educational Attainment

The majority of the population in Pottawatomie County has completed at least a high school degree, and 16.53% has a College Degree.



Labor Force

Pottawatomie County has a labor force of 32,610 people, with an unemployment rate of 4.50%.

32,610

Labor Force



4.50%

Unemployment Rate

▲4.65%

Unemployment Rate Change
(1 year)

Talent

Where are the top jobs by occupation?

Office and
Administrative
support



15.24%

4,457

Sales



11.2%

3,277

Executive,
Managers, and
Administrators



9.13%

2,672

Education,
Training, Library



6.84%

2,001

Food Preparation,
Serving



6.09%

1,782

Total Employees

29,255



• 2012 • 2013 • 2014 • 2015 • 2016

The work distribution of total employees in Pottawatomie County is:



39.00%

Blue Collar



60.00%

White Collar

Total Establishments

2,667



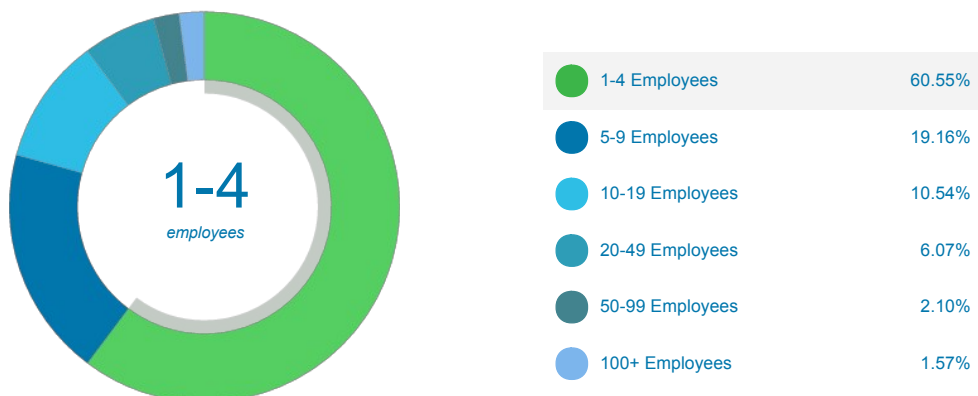
Businesses and Jobs

Pottawatomie County has a total of 2,667 businesses. In 2016, the leading industries in Pottawatomie County were Health Care and Social Services, Education, Retail, and Accommodation and Food Services.

Which are the top Industries by jobs?

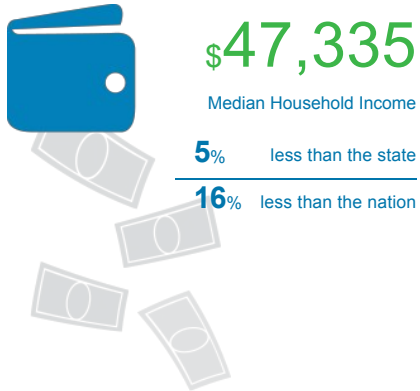


How many employees do businesses in Pottawatomie County have?

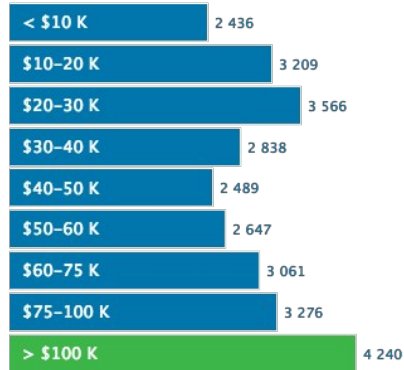


Income and Spending

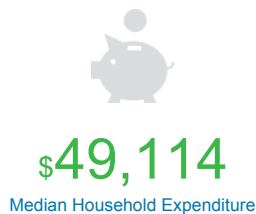
Households in Pottawatomie County earn a median yearly income of \$47,335. 38.10% of the households earn more than the national average each year. Household expenditures average \$49,114.00 per year. The majority of earnings get spent on Shelter, Transportation, Food and Beverages, Health Care, and Utilities.



Income Distribution



How do people spend most of their money?
PER HOUSEHOLD



Transportation

Residents spend an average of 24.00 minutes commuting to work. Pottawatomie County is served by 34 airports within 50 miles. Rail can be accessed within . Interstates can be accessed .



24.00min

Commute Travel Time



35(+50 miles)

Airports in Community



Interstate

In Community



Freight Rail

In Community

Taxes

Top State Corporate Income Tax

6.00%

Top State Personal Capital Gains Tax

5.30%

Top State Corporate Capital Gains Tax

6.00%

State Sales Tax

4.50%

Top State Personal Income Tax

5.25%

A Google Maps interface showing a map of Oklahoma. A popup window is open over Pottawatomie County, displaying demographic and economic data. The popup includes a small map of the county, a list of statistics, and a menu of report options. The background map shows major highways and city names across the state.

GREATER OKLAHOMA CITY
A BETTER LIVING. A BETTER LIFE

Pottawatomie County, Oklahoma
Population: 72,312
Labor Force Size: 32,610
Bachelors Degree or Higher: 18.15%
Household Median Income: 47,335
Commute Travel Time: 24

- Save to folder
- Full Report
- Labor Force Report
- Demographics Report
- Consumer Spending Report
- Wages Report
- Business Report
- Talent Pool Report
- Housing Report

Map data ©2017 Google Terms of Use Report a map error